

## Specifications

<b>Dimensions (L x W x H)</b>	Glory 2504: 8.1 x 6.4 x 2.6 m				
	Glory 2504 + Dryer + Varnish: 12.1 x 6.4 x 2.6 m				
	Glory 2504 + Dryer + Varnish + Slotter: 13.9 x 6.4 x 2.6 m				
	Glory 2504 + Dryer + Varnish + Slotter + Handle-Hole Die-Cutting Unit: 14.3 x 6.4 x 2.6 m				
<b>Board Size</b>	Maximum: 2000 x 2500 mm (Feeding Direction x Print Width) Minimum: 400 x 600 mm (Feeding Direction x Print Width)				
<b>Slotter</b>	Min. Slot Spacing: 230 x 90 x 230 x 90 mm Max. Slot Depth: 420 mm				
<b>Printing Modes</b>	<b>Resolution</b>	600 x 600	600 x 450	600 x 400	600 x 300
	<b>Linear Speed</b>	100 m/min	133 m/min	150 m/min	180 m/min
<b>Substrate/Handling</b>	Type:	Wide range of corrugated boards (kraft liner, white-top liner etc.)			
	Max. Media Width:	2500 mm			
	Thickness:	1-15 mm			
	Handling:	Leading-edge feeder, media positioning, vacuum suction, conveyor belt; all designed for smooth movement and high-quality printing			
<b>Printing</b>	Technology:	Single-Pass, Inkjet			
	Printhead:	Industrial-grade Kyocera printhead			
	Printhead Quantity:	Max. 20 pcs per color, Max. Printing Width 2160 mm			
	Ink Type:	Aqueous Ink			
	Ink Colour:	CMYK			
<b>RIP</b>	Software:	3rd party RIP Software			
	Input Format:	PDF, EPS, TIFF, JPEG & AI etc.			
		Optimal color solutions for substrates of your choice			
<b>Other Features</b>	Automatic warp detection and warning system Automatic ink consumption calculating function Remote monitor system for instant on-line error detection and resolution Production management system available				
<b>Operating Environment</b>	Temperature:	20°-30°C			
	Humidity:	40~80% RH (non-condensing)			
	Power :	AC380V 3P+PE 50/60Hz			
	Air :	0.6~0.84 MPa			
<b>Total Power</b>	Glory2504:	75 Kw	<b>In Actual Production (Reference Only)</b>	Glory2504:	24 Kw
	Varnish	118 Kw (Dryer 90kw)		Varnish:	18 Kw (Dryer Excluded)
	Dryer:	110 Kw (Dryer 90kw)		Dryer:	14 Kw (Dryer Excluded)
	Slotter:	77 Kw		Slotter:	60 Kw
	Handle-Hole Die-Cutting Unit:	15 Kw		Handle-Hole Die-Cutting Unit:	14 Kw
<b>Weight</b>	Glory 2504:	15.2 T			
	Varnish:	4 T			
	Dryer:	3.2 T			
	Slotter:	8 T			
	Handle-Hole Die-Cutting Unit:	3 T			
	Rail System (max.):	1.8 T			



## Glory 2504

### Large Format Single-Pass Corrugated Digital Press

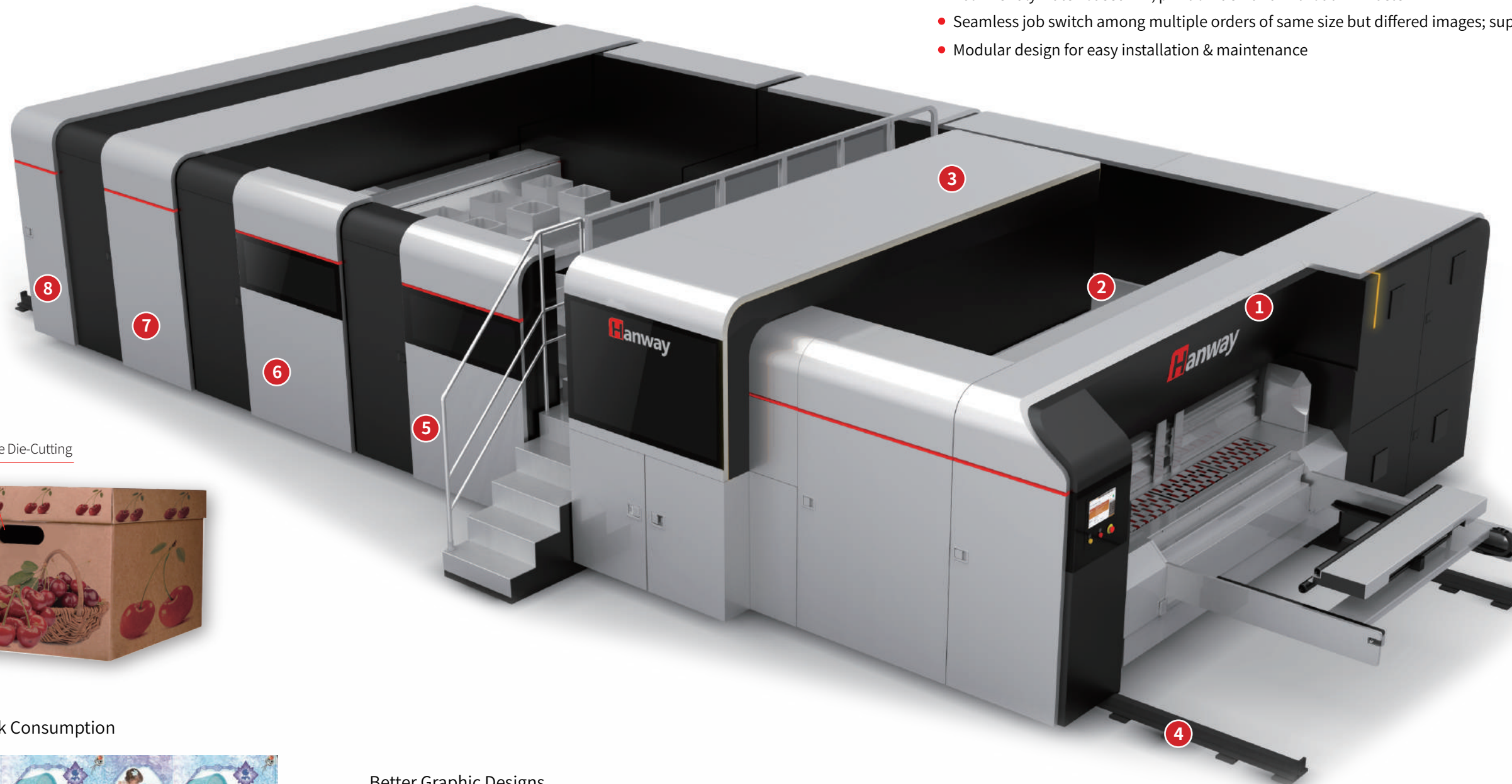


Shenzhen HANWAY Industrial Digital Equipment Co.,Ltd.  
 Add: The Third Factory, NO.322 Yuanhu Road, Longgang District Shenzhen China.  
 Tel: +86 0755-29375889  
 Fax: +86 0755-23217841  
 E-mail: info-hanway@hanglorygroup.com  
 Http://www.hanway-print.com




# Glory 2504

- Industrial large-format design with the maximum print width of 2,160mm and the highest productivity of 17,773m<sup>2</sup>/hr
- End-to-end workflow integration with Glory2504 printer, slotter and stacker, save time & labor
- No plate-making; no minimum order limitation; instant response to customers' demands; zero inventory
- Eco-friendly water-based ink; print on-demand without ink waste
- Seamless job switch among multiple orders of same size but differed images; super efficiency
- Modular design for easy installation & maintenance



- 1 Glory 2504
- 2 Primer
- 3 Printing Unit
- 4 Rail System
- 5 Varnish
- 6 Dryer
- 7 Slotter
- 8 Handle-Hole Die-Cutting Unit

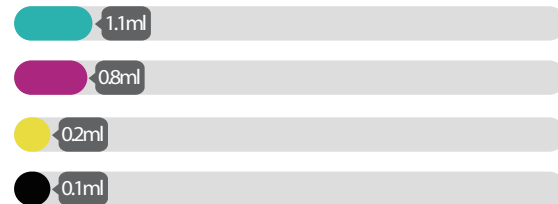
Handle-Hole Die-Cutting



## Lower Ink Consumption

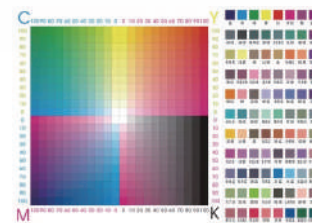


Image Dimension:2000 x 1345 mm  
Image Pixel:47248 x 31765  
Resolution:600 x 600 dpi



## Better Graphic Designs

Standard with optional colors



Customized & personalized designs



QR codes & bar codes



## Higher Printing Quality



High performance Kyocera printhead in highest resolution of 600dpi, achieves High-End flexo print quality.

## Quicker Job Changeover

